

O

SEMBA NEWS

Volume 21 Number 8 Newsletter of the Southeastern Michigan Beekeepers' Association

December 2011

If your address label denotes N11, your membership renewal is due. Please use the renewal slip which was included in the November SEMBA NEWS or use the renewal application on the sembabees.org web page.

SEMBA BOARD MAKES CHANGE IN DUES AND FEE STRUCTURE

For the year 2012, SEMBA's yearly membership dues will remain the same as last year. **However**, those members paying yearly dues who elect to receive the newsletter by postal mail (as opposed to e-mail) will incur a \$10 surcharge to help defer the copying and postage expense for the newsletter. This aforesaid change becomes effective January 1, 2012.

Essentially,

~ If you elect to receive the SEMBA Newsletter by e-mail, SEMBA dues will remain \$10 per individual or \$15 per family.

~ If you elect to receive the SEMBA Newsletter by postal mail, dues will be \$20 per individual or \$25 per family.

Due to continued cost increases that we are and will be experiencing, the SEMBA Executive Board has set a small admission charge of \$5 for members who attend the March 17, 2012 SEMBA Beekeeping Conference. Children under the age of 18 attending with a SEMBA member will not be charged. Members volunteering to work as presenters or working on a conference committee will be exempted from paying any registration fees. Write or call Richard Mendel to volunteer a small portion of your time on a committee. He can be reached at brescue@att.net or [734-660-8621](tel:734-660-8621).

Also, please note that during the March 17th SEMBA Beekeeping Conference, only membership renewals can be made. No new memberships will be taken at that time.

SEMBA WINTER MEETING

When: Sunday, January 29, 2012

Where: Lower Waterman Center, Schoolcraft College, 18600 Haggerty Road Rd., Livonia

Potluck: 1:30 p.m. Bring a dish to pass with serving utensils and your own table service. Coffee and tea provided.

Program: 2:30 p.m.

Late winter feeding and hive maintenance will be discussed by a panel of experts – Winn Harless, Keith Lazar, Richard Mendel, Clay Ottoni, and Bill Sirr.

The SEMBA Executive Committee will meet following the program to address any remaining issues regarding the March 17th Beekeeping Conference.

ANN ARBOR BACKYARD BEEKEEPERS (A2B2)

A2B2 meets the second Tuesday of each month at the Matthaei Botanical Gardens, 1800 North Dixboro Road, Ann Arbor, MI. If you wish to be on the e-mail notification list, contact the group's leader, Richard Mendel. brescue@att.net or [734-660-8621](tel:734-660-8621)

EDITOR'S OBSERVATIONS AND OPINION

Since SEMBA beginnings in 1934, its main purpose has been to help disseminate the latest beekeeping information and helping to improve methods of beekeeping. How to do this has been a major challenge. We now are an organization of over 400 members many of which have no hives and others with over fifty colonies. Geographically, our membership extends from Michigan's Thumb, west to Lansing, and south to the Ohio border. Presently, our affiliated club meetings are held at Schoolcraft College in Livonia and the E.L. Johnson Nature Center in Bloomfield Township. Average travel distance for most members is about 50 miles one way.

In my opinion, more local clubs are needed to help disseminate the latest information and improved methods of beekeeping. Over the years, SEMBA has had affiliate chapters at Cranbrook (now called Oakland) and Seven Ponds, (now an independent club) to better serve

local beekeepers. Recently, Richard Mendel inaugurated the Ann Arbor Backyard Beekeepers (A2B2) meeting monthly and independently at Matthaei Botanical Gardens. Other clubs could be patterned after A2B2 either independently or as an affiliate chapter of SEMBA. Locations that have been suggested as possibilities for local clubs are: Adrian, Western Washtenaw County, Northern Oakland County and the Monroe-Flat Rock area..

SEMBA could assist in organizing local bee clubs in several ways providing they meet requirements for affiliate chapter status. SEMBA could provide a list of SEMBA members in local areas, some monetary assistance for club meeting rental space, assistance in locating speakers, provide videos from the SEMBA video library, and list meeting announcements in the SEMBA newsletter.

If you are interested in forming a club, please contact one of the individuals listed below:

SEMBA LEADERS

President.....*Clay Ottoni
1st Vice President.....Winn Harless
2nd Vice President.....*Richard Mendel
Secretary.....*Randy/Sandy Graichen
TreasurerMary Sutherland
Past President.....Roger Sutherland
Web Master.....Tom Lisk
Beginning Bee Class Leader.....Mike Siarkowski
Advanced Bee Class Leader.....Winn Harless
SEMBA HostessesDonna & Howard Laws
and Teresa & Walter McCurdy
Oakland Chapter.....Dennis and Donna Holly
Historian.....Ron Forfinski
SEMBA Representative to MBA.....Rich Wieske
SEMBA Director.....Fritz Sanders
SEMBA Director.....Don Schram
*Elected November 17, 2011

NEW SPEAKER'S SERVICE

www.honeybeespeak.com

Larry Connor, Ph.D. and Matt Newton have developed a new website that will initially provide a linking service for beekeeping speakers and those who want to hear them speak. They will charge the speaker a modest fee for this, but it will be a chance for more income and travel.

If you speak about bees and beekeeping, on any subject area, visit www.honeybeespeak.com to apply to be a speaker. There is no initial fee for this. They invite those who speak to BOTH beekeeper groups and the general public.

Contact Larry Connor ljconnor@aol.com

HOW HIGH WILL HONEY BEES FLY?

I work in the Renaissance Center downtown and was wondering about hives on skyscrapers. I've heard about them on buildings 14 stories up but do you have a sense of what the max altitude would be? I imagine the weight of a returning forager could be a problem but I e-mailed a person in NYC who noted that they seem to float upward on current. Have you heard of anyone tackling a 40-story or taller hive?

Thanks, Todd Justman, 248-922-7156

SEMBA'S 2011 ANNUAL MEETING

Seventy SEMBA members attended the Annual Meeting on November 17, 2011. Michigan State Apiarist Mike Hansen presented an excellent program entitled "National Honey Bee Survey and Regulatory Apiculture in Michigan". He began his presentation by showing the video "*The Beauty of Pollination*". You may view the video online by going to:

<http://www.youtube.com/v/xHkq1edcbk4?version=3%20%20%20%20>

Following his presentation he listed these beekeeping Websites of interest for beekeepers:

~**Africanized Honey Bee Modeling:**

www.ahb.colostate.edu

~**Africanized Honey Bee Emergency**

Response Planning: Florida Department of Agriculture and Consumer Services:
www.freshfromflorida.com/pi/plantinsp/ahb.html

~**Michigan's Cottage Food Law:**

www.michigan.gov/cottagefood

~**Michigan's Right to Farm, Generally Accepted Agricultural Management Practices.** (The Bee Keeping chapter is located in the Care of Farm Animals

GAAMPS.) www.michigan.gov/gaamps

~**National Municipal Code Web site**

recommended by Kim Flottum:
www.municode.com

~**Extension Org Websites:** You can ask a question of a nationally recognized expert. www.extension.org/bee-health,
www.extension.org/pages/21734/disease-and-pest-information-honey-bees,
www.extension.org/pages/263identification-of-native-bees

~**Mid Atlantic Apiculture Resource and Extension Consortium: MAAREC**

<http://agdev.anr.udel.edu/maarec/>

~**Project ApisM:** <http://projectapis.org/>

NEW DRUG FOR AMERICAN FOULBROOD

On November 16, 2011, The Food and Drug Administration (FDA) announced the availability of a Public Master File (PMF) containing safety and effectiveness data to support a new animal drug application (NADA) or supplemental NADA for use of lincomycin hydrochloride water soluble powder for the control of American foulbrood (*Paenibacillus larvae*) in honey bees.

These data have been reviewed by FDA's Center for Veterinary Medicine (CVM) and demonstrate the safety and effectiveness of this product. They may be used by pharmaceutical sponsors at no cost to support the approval of this product. Sponsors need to supply the additional manufacturing, labeling, and other required information to constitute a complete NADA. Today's announcement is not for the approval of this product - only that data are available to support a pharmaceutical sponsor's new animal drug application.

The data, contained in Public Master File (PMF) 5988, were compiled by the USDA's Minor Use Animal Drug Program (formerly, the National Research Support Project 7 (NRSP-7)), a national research program that facilitates generation of data to support FDA approval of new drugs for minor uses and minor species of agricultural importance.

Pfizer will be submitting the rest of the information needed to obtain approval for this indication on the current product label.

~Source: Stephen F. Sutherland DVM, Senior Director of U.S. Regulatory Affairs at Pfizer Animal Health's Veterinary Medicine Research and Development organization.

SEMBA MEMBER PAUL MARKS IS NAMED FARM BUREAU AGRICULTURAL PROMOTER OF THE YEAR

At the 92nd annual meeting of the Michigan Farm Bureau (MFB) held at the Amway Grand in Grand Rapids, the Agriculture Promoter of the Year Award was presented to Paul Marks from Monroe County. The award, which includes a \$500 grant for future promotion efforts, recognizes MFB members who do exceptional work voluntarily promoting agriculture and educating the non-farming public about the industry.

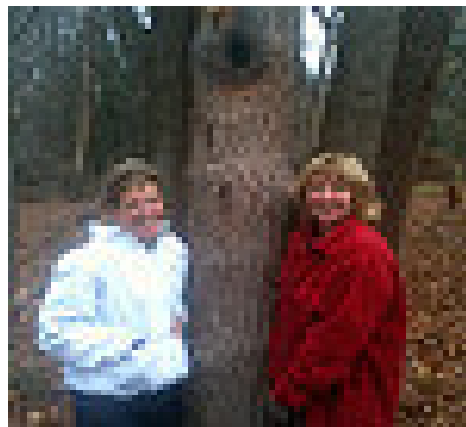
Paul began as a vocational agriculture instructor and FFA advisor in the 1950s and '60s. By the mid-1970s, his career with MSU, as Monroe County Agricultural Extension Agent was already well seasoned, and he had begun

the Country Charmers 4-H group. Throughout the '80s and '90s, his involvement stayed intense and consistent, not even flagging after his retirement from Extension in 2001. Paul, who has presented programs to all age groups, has played a key role in Monroe County's Ag Awareness Day since its inception. His honey bee presentation has been a fixture from the start.

BEE TREE SAVED BY HUGH McDIARMID

The city of Livonia cut down a tree with a honeybee hive in it in a city park. Comb was visible in the upper end of the log, where yellow jackets were robbing the honey. At the request of a park neighbor on whose property the tree fell, I came to try and assist the hive. The incident comes at a critical time as the bees prepare the hive to survive the cold Michigan winter.

I sealed both ends with plywood and wood screws. Within a few days, four of us carried the log 20 feet onto park property and propped it up against a cluster of trees. This way, the comb and hive were roughly oriented the way they were when they built the comb. A hive should have at least 60 pounds of honey to make it through winter....and even if they have enough food they can die from cold so harsh they are not able to move several centimeters to access fresh honey. They share resources so equitably that if they die (perhaps 10,000 of them) they all die within hours of each other.



Karen McDiarmid and Linda St. John.

This saved bee tree nest will have a slim chance of survival, but at least they have a chance –
by Hugh McDairmid

SPEAKER NEEDED

I was wondering if you know someone in the Grosse Pointe or Detroit Area who would like to come to the meeting on the day that the girls receive their bee hive patches to discuss how important bees are. This will probably be on Monday March 26th at 3:45 at our school. Please let me know if there is someone who might be able to come and speak. Contact: , Suzanne Forbes, Leader GS Daisy Troop 75314 scf_97@yahoo.com

PROCEDURE FOR ORDERING BEEKEEPING MAGAZINES

To order beekeeping magazines at bee club discounted prices, call the publishers directly and indicate to them the name of your local club. Current discounted prices for *Bee Culture* are: 1 Yr. - \$21.00 and 2 Yr. - \$38.00; New rates for *American Bee Journal* are: 1 Yr. - \$20.25; 2 Yr. – \$38.25; and 3 Yr. - \$54.00. For *Bee Culture* call: 1-800-289-7668. For *American Bee Journal* call: 1-888-922-1293 or 1-217-847-3324.

NASS ANNUAL HONEY REPORT ELIMINATED AND THEN REINSTATED

The National Agricultural Statistics Service (NASS) announced on October 17, 2011 that the Annual Bee and Honey Report would be eliminated. Then on December 9, 2011 NASS announced: “a recently concluded and deliberate review of all programs against mission and user-based criteria, aimed at finding cost savings and forward-thinking business efficiencies so that timely, accurate and useful data will remain available in service to agriculture”. The Annual Bee and Honey Report will be available on March 30, 2012.

SEMBA Bargain Corner

For Sale:

Honey, 1 lb., 2lb., 5lb., jars, and 5 gal. buckets of excellent tasting honey from Livingston county. Call Mike Siarkowski at [517-545-0824](tel:517-545-0824) or e-mail bcky286@yahoo.com

Honey, 3 and 5 gallon buckets. The 5's are \$120 and the 3's are \$72. Call Dave Kriesch at [810-441-2012](tel:810-441-2012).

Honey, 100 five gallon buckets of Fall raw, unheated and unfiltered honey from the Kussmaul Honey Farm. \$125.00 each or less if you buy a large quantity. Kussmaul's colonies are located in Lenawee, Washtenaw and Jackson Counties. Please call Kussmaul Honey Farm, [517-456-9966](tel:517-456-9966).

Comb Honey, Call Winn Harless at [734-453-2914](tel:734-453-2914).

Bees, 3 lb. packages, from an accredited Georgia beekeeper, available starting the 1st week of April, 2012. Price \$80.00 to \$90.00. Reservation deposit is \$30.00 per package. Pickup at Kussmaul Honey Farm, 2017 W. Michigan Avenue, Clinton, Michigan 49236. Please call Rich Kussmaul [517-456-9966](tel:517-456-9966) to make arrangements.

Nucs, 2012 Medication Free 5-Frame Nucs For Sale - Medication Free Michigan survivor bees. Anticipated arrival date of around April 20th, with pick up locations in White Lake, MI or Davison, MI. Price is \$135 per nuc. For more details, please e-mail Don Schram at don.schram@gmail.com or call [248-310-8205](tel:248-310-8205).

Wanted:

Empty 9 5/8 deep supers. Contact Carola Fisher at cjfhahermehl@gmail.com

Southeastern Michigan
Beekeepers' Association
Organized April 1, 1934

SEMBA Membership
5488 Warren Road
Ann Arbor, MI 48105-9425

Affiliated chapters
Oakland Beekeepers' Club



Schoolcraft Beekeepers' Club

